

## Description of the variety

### Achkikizhi

Crop: **Grapevine**

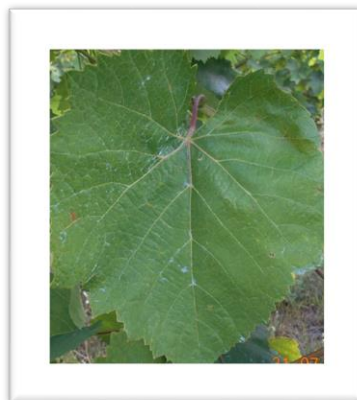
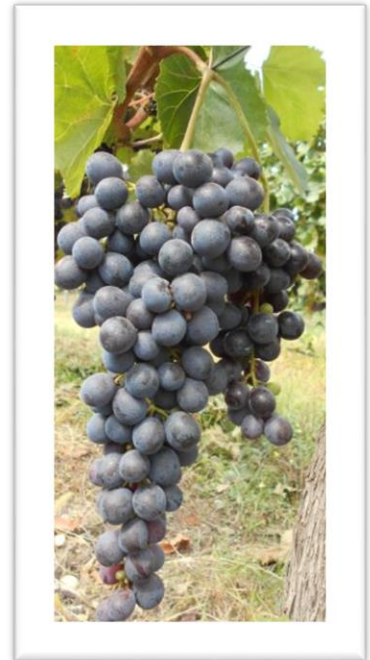
Local name of variety: **Achkikizhi**

Botanical name of the taxon: *Vitis vinifera* L. ssp

Breeder: **Local variety**

Distribution: **It is mainly spread in Abkhazia**

Usage: **High quality red wine**



## Basic characteristics:

### Young shoot

2	Young shoot: opening of the shoot tip	(5) open
4	Young shoot: intensity of anthocyanin coloration on prostrate hairs of the shoot tip	(1) absent
3	Young shoot: density of prostrate hairs on the shoot tip	(1)absent

### Shoot

9	Shoot: attitude (before tying)	(5) horizontal
10	Shoot: color of the dorsal side of internodes	(2) green and red
11	Shoot: color of the ventral side of internodes	(1)green

### Young leaf

6	Young leaf: color of upper side of blade (4th leaf)	(4) copper-reddish
7	Young leaf: density of prostrate hairs between main veins on lower side of blade (4th leaf)	(9) very dense

### Mature leaf

18	Mature leaf: shape of blade	(1)heart shaped
20	Mature leaf: number of lobes	(2) three
19	Mature leaf: blistering of upper side of blade	(3) weak
26	Mature leaf: shape of teeth	(3) both side convex, (2) both side straight
23	Mature leaf: degree of opening / overlapping of petiole sinus	(3) open
28	Prostrate hairs between main veins on lower side of blade	(5) medium

### Woody Shoot

44	Woody shoot: main color	(3) brown
----	-------------------------	-----------

### Sexual organs

16	Flower: sexual organs	(3) fully developed stamens and fully developed gynoecium
----	-----------------------	---

### Bunch

32	Bunch: length (peduncle excluded)	(7) long
33	Bunch: density	(5) medium
34	Bunch: length of peduncle of primary bunch	(3) short

### Berry

36	Berry: shape	(4) narrow ellipsoid
37	Berry: color of skin	(8) dark red-violet
40	Berry: intensity of flesh anthocyanin coloration	(1) absent
41	Berry: firmness of flesh	(3) firm
42	Berry: particular flavor	(1) absent
43	Berry: formation of seeds	(3) perfect

**Additional characteristics according to OIV:**

OIV 016	Shoot: number of consecutive tendrils	(1)two or less
OIV 070	Mature leaf: area of anthocyanin coloration of main veins on upper side:	(3) up to the 1 <sup>st</sup> bifurcation
OIV 072	Mature leaf: goffering of blade	(5) medium
OIV 074	Mature leaf: profile of blade in cross section	(5) twisted
OIV 080	Mature leaf: shape of base of petiole sinus	(2) { brace shaped
OIV 081-1	Mature leaf: teeth in the petiole sinus	(1)absent
OIV 081-2	Mature leaf: petiole sinus base limited by vein	(1)absent
OIV 083-2	Mature leaf: teeth in the upper lateral sinuses	(1)absent
OIV 086	Mature leaf: density of prostrate hairs on main veins on lower side of blade	(1)weak
OIV 087	Mature leaf: density of erect hairs on main veins on lower side of blade	(1) absent or very low
OIV 203	Bunch: width	(5) medium
OIV 208	Bunch: shape	(2) conical
OIV 209	Bunch: number of wings of the primary bunch	(2) one-two
OIV 220	Berry: length	(3) short
OIV 221	Berry: width	(3) narrow
OIV 351	Vigor of shoot growth	(7) strong
OIV 502	Bunch: single bunch weight	(3) low
OIV 503	Berry: single berry weight	(3) low
OIV 504	Yield per m <sup>2</sup>	(7) high